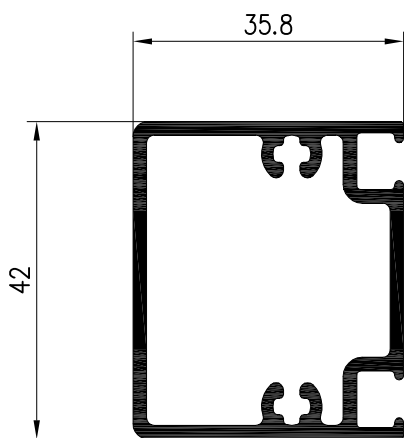
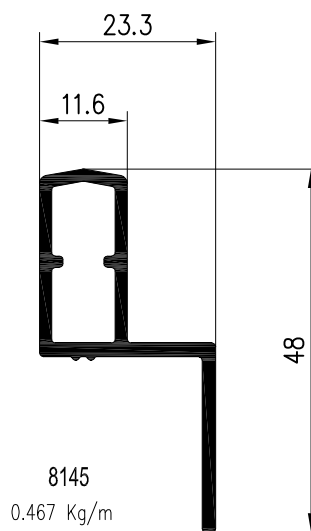


8144  
1,445 Kg/m

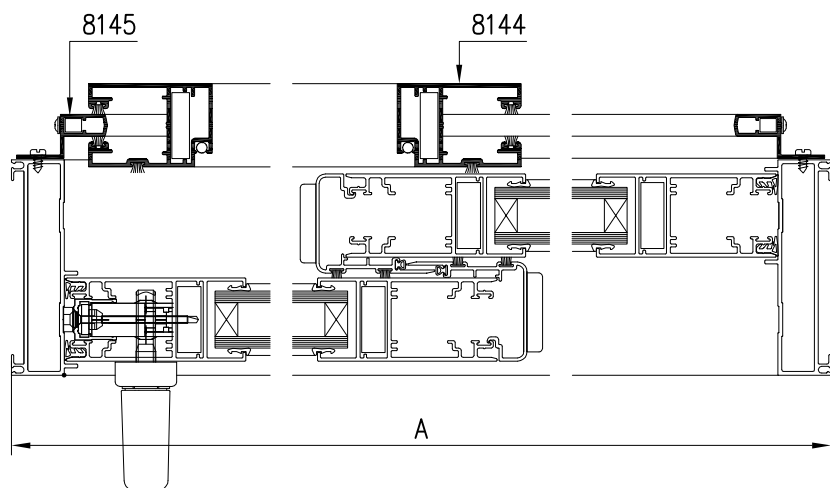


8143  
0.904 Kg/m

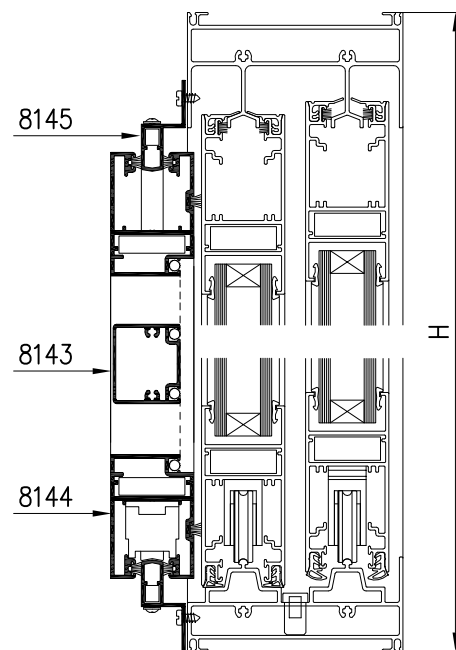


8145  
0.467 Kg/m

SECCION HORIZONTAL



SECCION VERTICAL

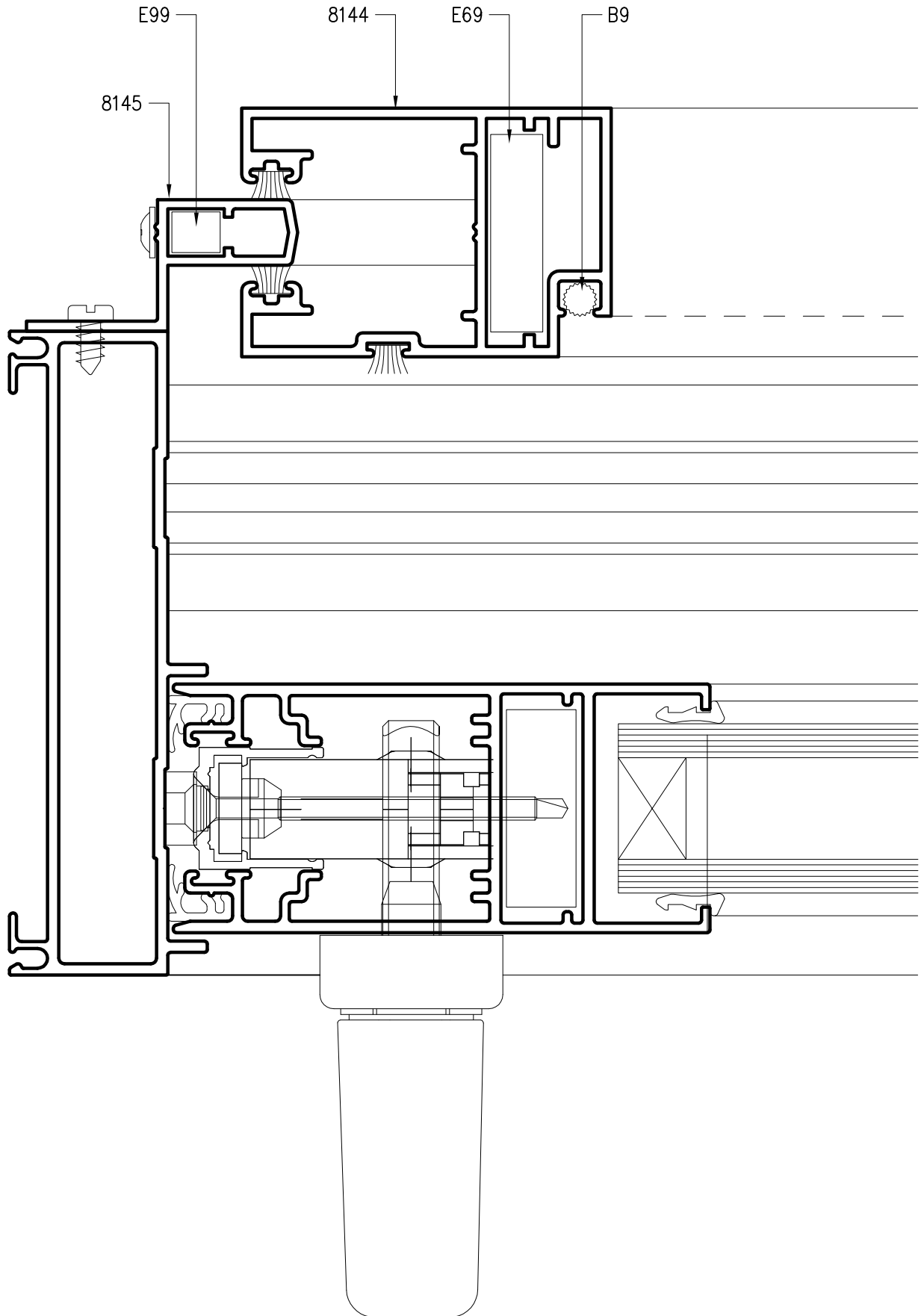


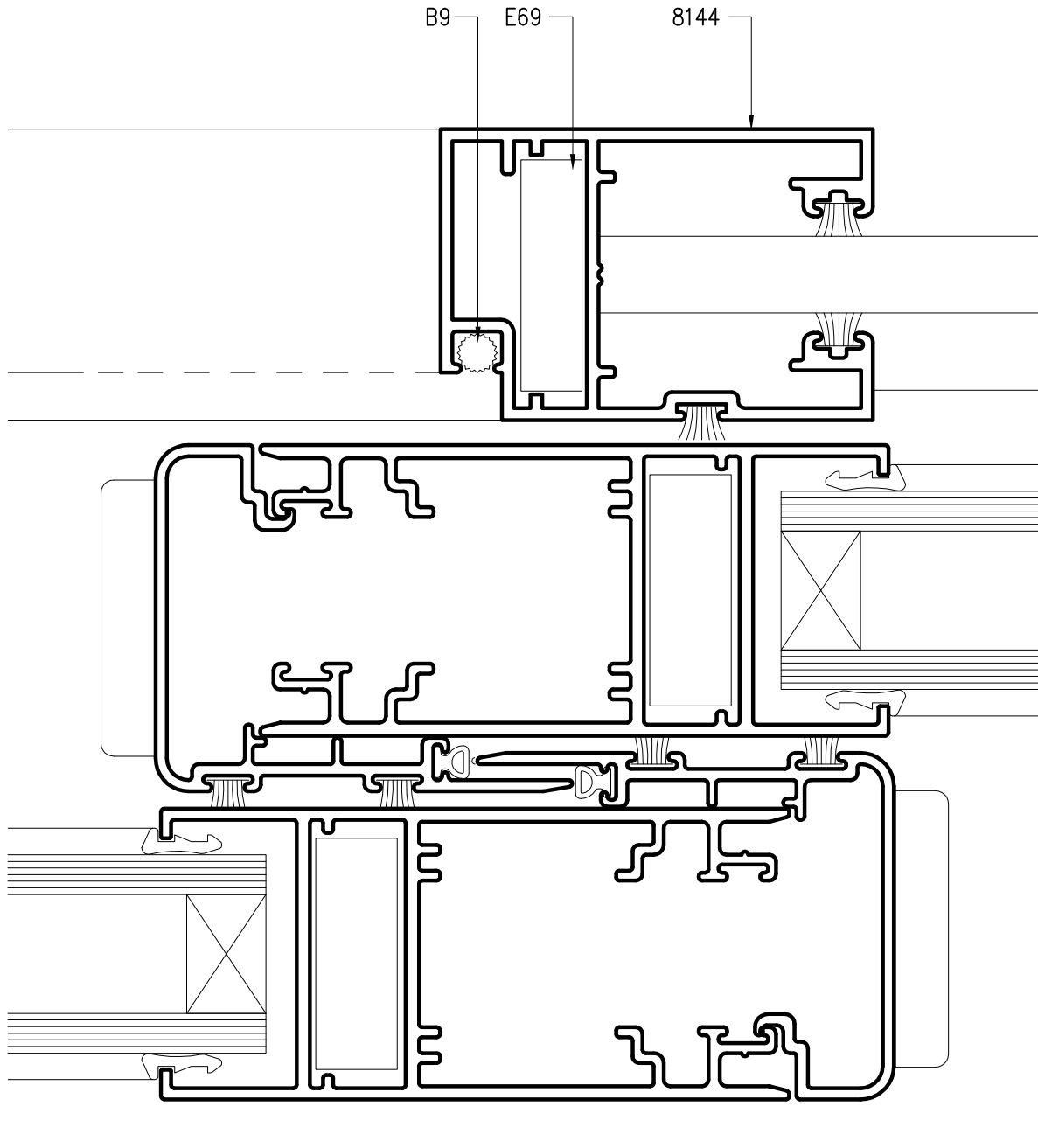
Dimensiones de corte de perfiles

A: Ancho total del marco  
H: Altura total del marco

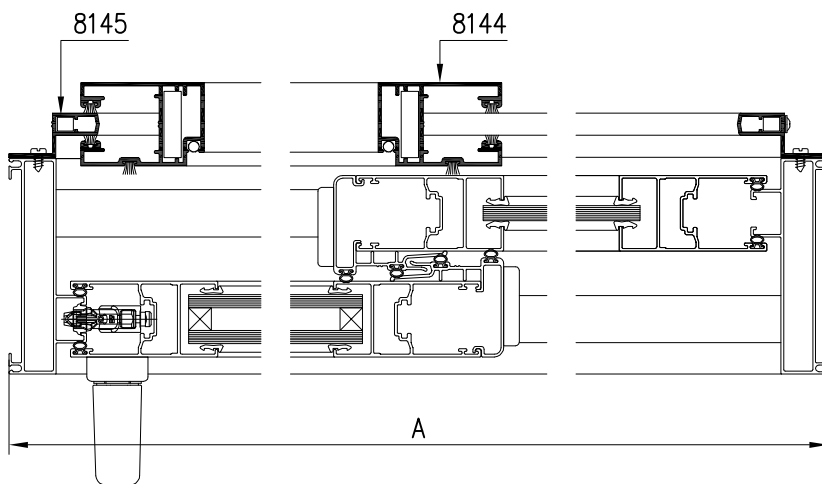
Cantidad de piezas	PERFIL	DESCRIPCION	MEDIDA mm	CORTE
2	8145	Jambas guía	H-37	45-45
2	8145	Umbral y dintel guía	A-6	45-45
2	8144	Parantes de hoja	H-113	45-45
2	8144	Zocalo y cabezal de hoja	$(A/2)+13$	45-45
1	8143	Travesaño	$(A/2)-118$	90-90



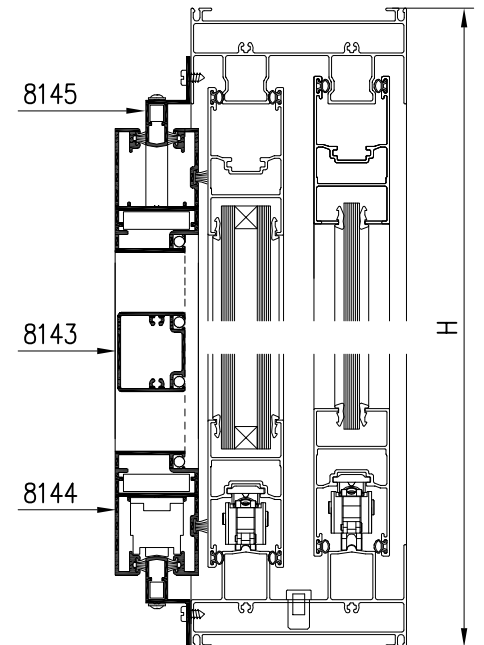




SECCION HORIZONTAL



SECCION VERTICAL

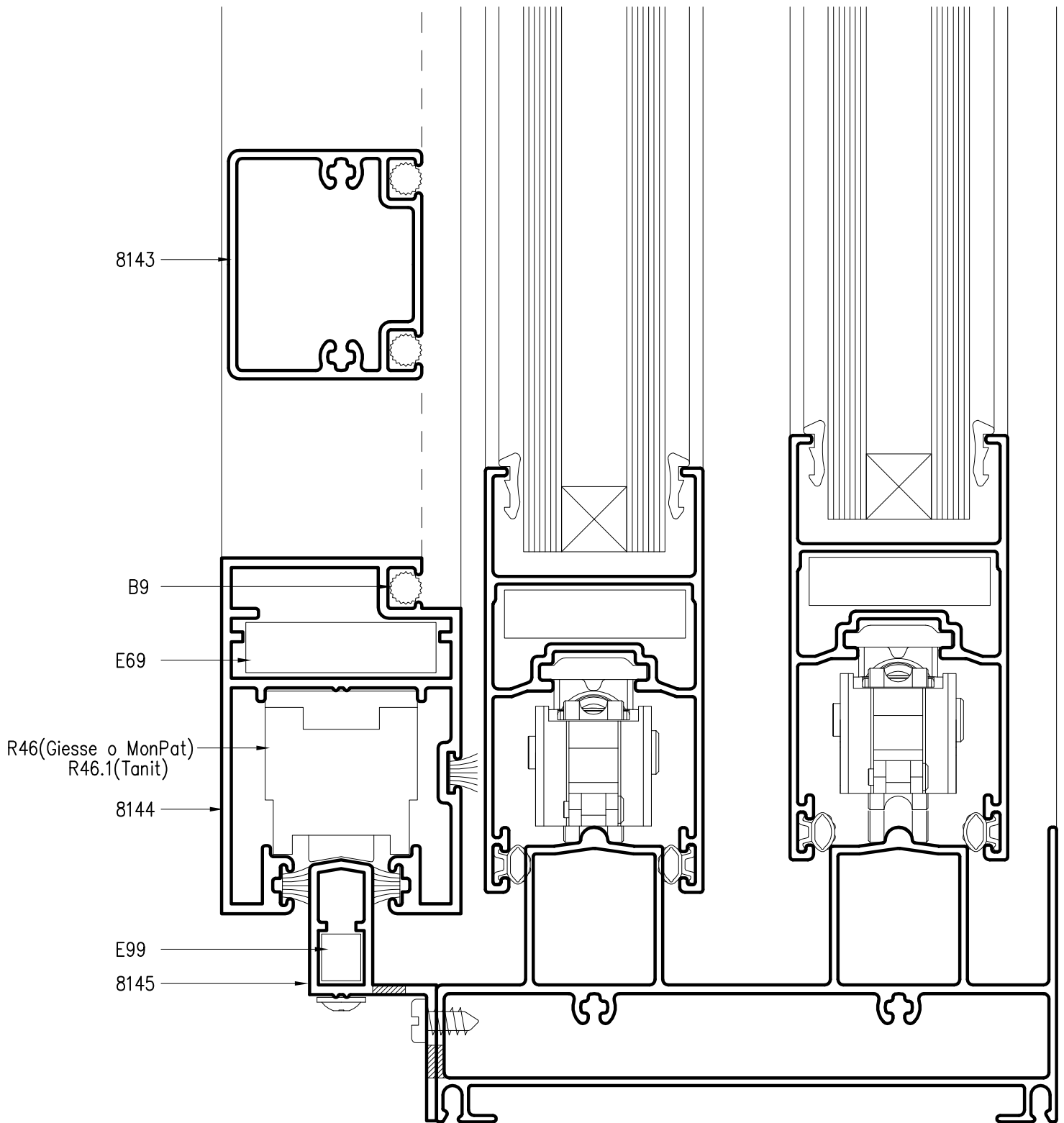


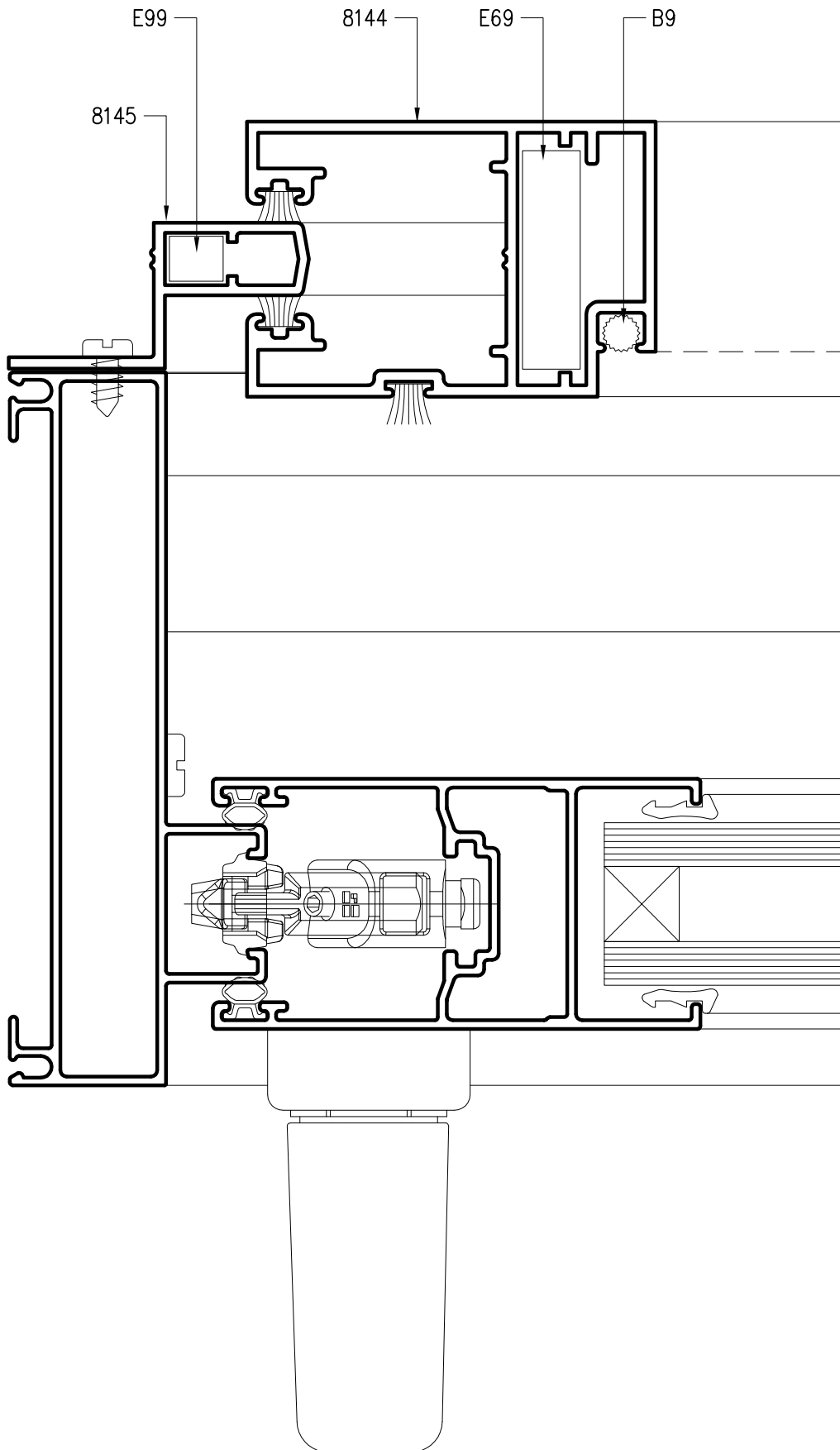
Dimensiones de corte de perfiles

A: Ancho total del marco

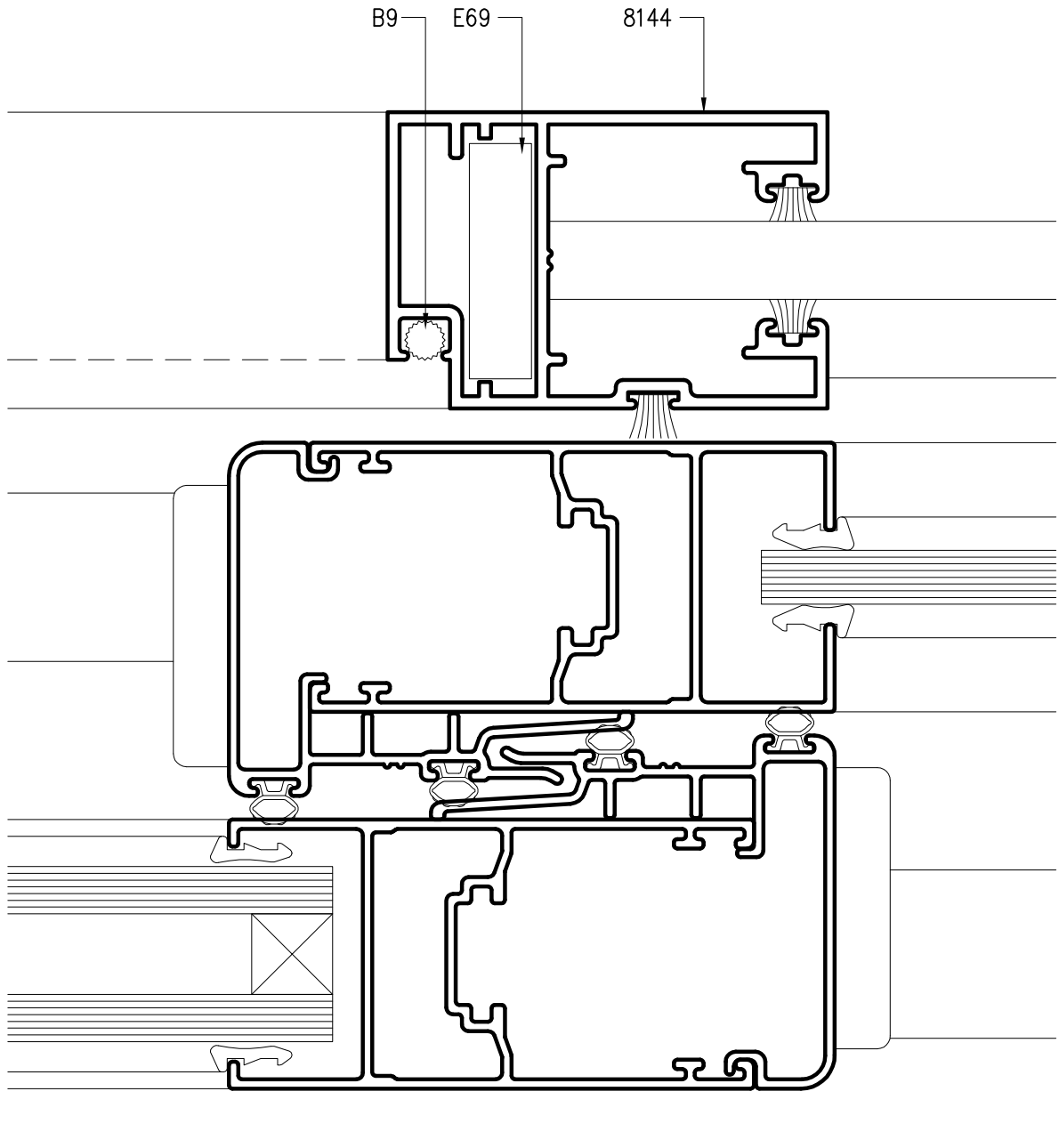
H: Altura total del marco

Cantidad de piezas	PERFIL	DESCRIPCION	MEDIDA mm	CORTE
2	8145	Jambas guia	H-26	45-45
2	8145	Umbral y dintel guia	A	45-45
2	8144	Parantes de hoja	H-102	45-45
2	8144	Zocalo y cabezal de hoja	$(A/2)+6$	45-45
1	8143	Travesaño	$(A/2)-125$	90-90

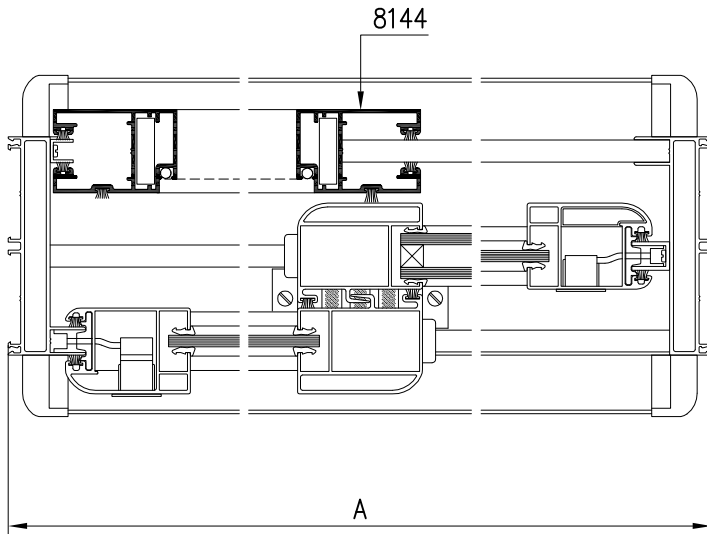




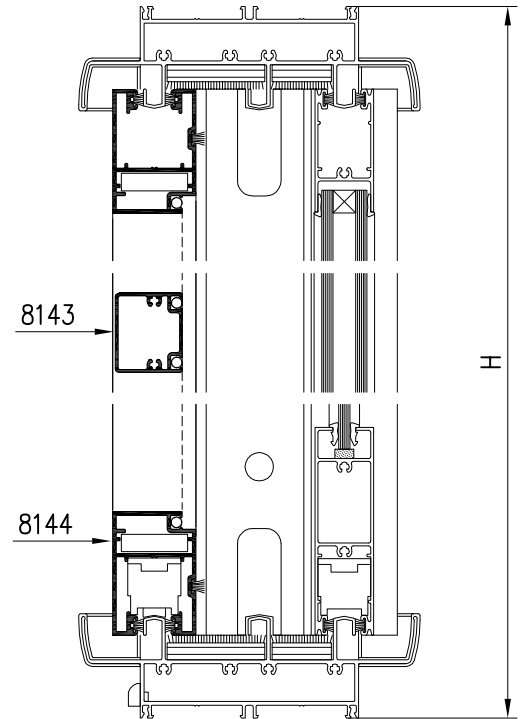




SECCION HORIZONTAL



SECCION VERTICAL



Dimensiones de corte de perfiles

A: Ancho total del marco  
H: Altura total del marco

Cantidad de piezas	PERFIL	DESCRIPCION	MEDIDA mm	CORTE
2	8144	Parantes de hoja	H-88	45-45
2	8144	Zocalo y cabezal de hoja	(A/2)+8	45-45
1	8143	Travesaño	(A/2)-123	90-90

